



466 Angle Gage

1-45°

A convenient, timesaving tool for inspectors, toolmakers, and diesinkers when checking angles. Tool also replaces a protractor in many instances. The gage has 18 leaves, each with a different angle including 14-1/2° (1/2 the Acme Standard of 29°). Leaves are made of the finest spring-tempered steel and both the angle edge and two sides are ground. Approximately 9/32" thick, 1-1/16" wide and 4-3/16" long.



466 Angle Gage

Range	Leaves	Angles Available	Catalog No.	EDP
1-45°	18	1°, 2°, 3°, 4°, 5°, 7°, 8°, 9°, 10°, 12°, 14°, 14-1/2°, 15°, 20°, 25°, 30°, 35°, 45°	466	52463

C391 Center Gage

60° American National

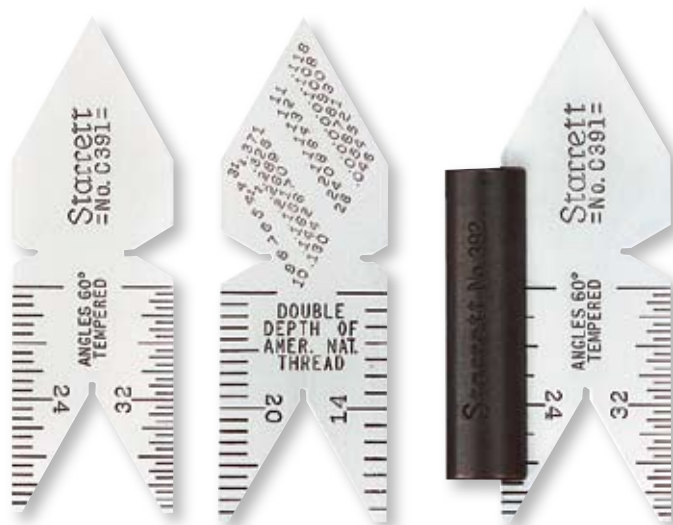
C396 Center Gage

55° Whitworth or English

C398M Center Gage

60° Metric

- Extremely handy for use in grinding and setting screw cutting tools
- Meet American National or U.S. 60°, Whitworth or English 55°, and Metric 60° standards
- Very useful for finding number of threads per inch through graduations in 14ths, 20ths, 24ths and 32nds of an inch on C391 and C396
- Graduations on C398M are in mm and 1/2mm
- C391 Gage also has a table of double depths of threads for determining size of tap drills
- Made of spring-tempered steel with satin chrome finish
- Ground gaging surfaces



C391 Center Gage. Left: Front 60° angle side. Center: Back with double depths of threads gage. Right: Same gage with center gage attachment.

392 Center Gage Attachment

- Useful for holding Starrett center gages firmly against lathe arbor or faceplate when setting both internal and external screw cutting tools
- Slot containing flat spring holds gage and V groove in the other side permits locating the attachment against lathe arbor

Center Gages with Inch Graduations

Catalog No.	EDP	Description
C391	51475	American Unified National Standard, 60°
C396	51477	Whitworth or English Standard, 55°

Center Gages with Millimeter Graduations

C398M	51478	Metric Standard, 60°
-------	-------	----------------------

Center Gage Attachment

392	51476	Center Gage Attachment
-----	-------	------------------------